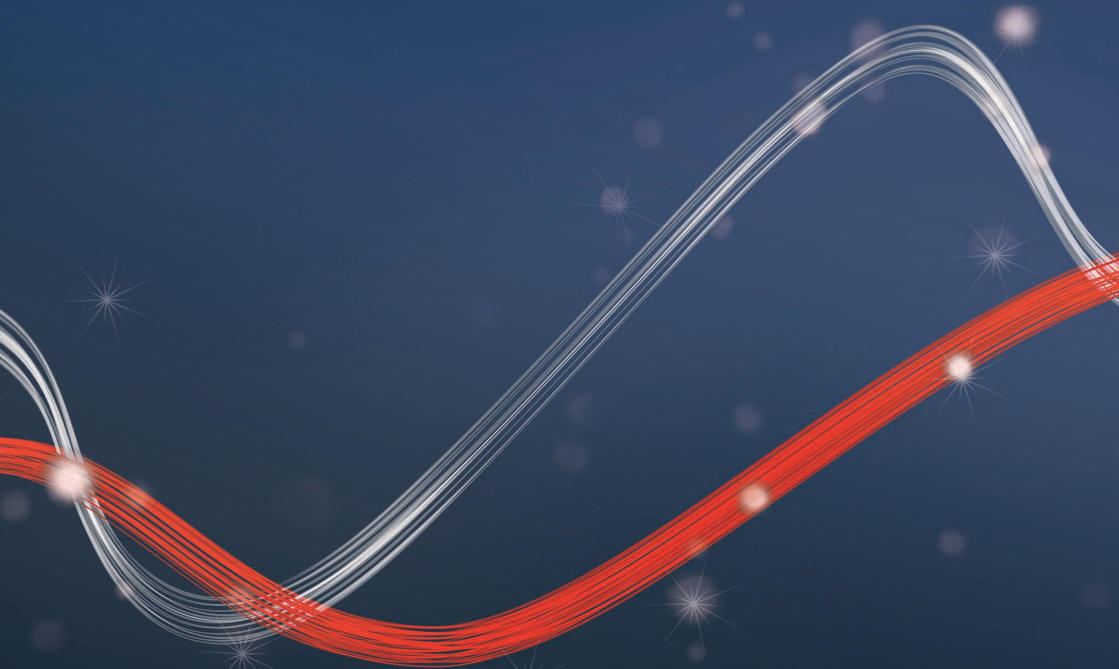




Be ahead

LUX

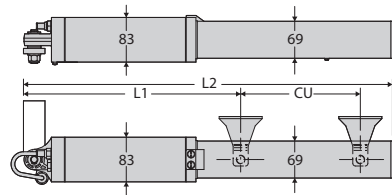




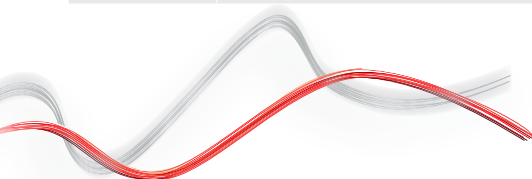
LUX



Hydraulic pistons for intensive use



	LUX	LUX R	LUX B	LUX 2B	LUX R 2B SN2	LUX FC 2B	LUX GV	LUX GV-2 B	LUX L	LUX G	LUX GV-S
Control unit	RIGEL G										
Motor power supply	230 V										
Power input	250 W					290 W	250 W				
Slowdown	no				yes		no				
Impact reaction	hydraulic clutch										
Frequency of use	very intensive										
Environmental conditions	from -10 °C to 60 °C		from -10 °C to 60 °C								
Protection rating	IP57										



North branch - 0161 456 0456
South branch - 01488 674 750

info@bft.co.uk
www.bftautomationuk.com