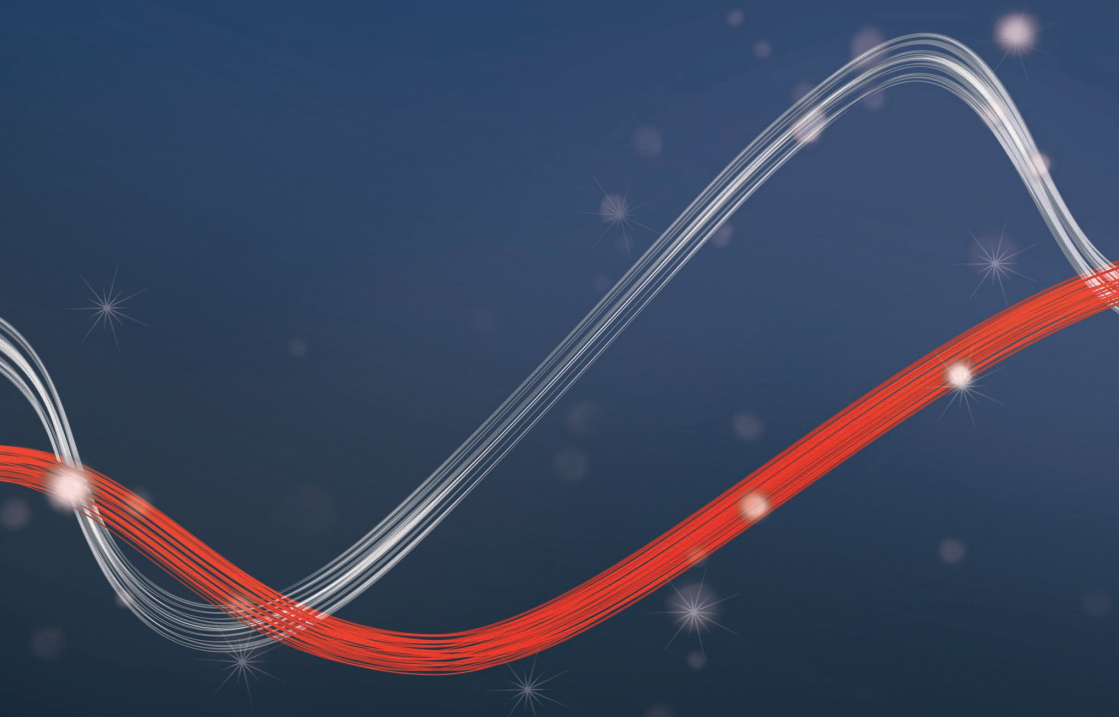
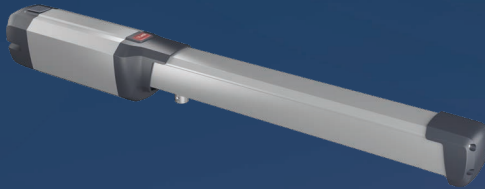




Be ahead

PHOBOS AC A

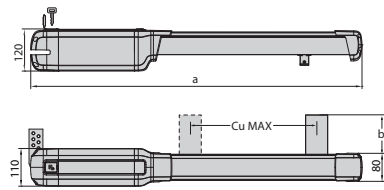




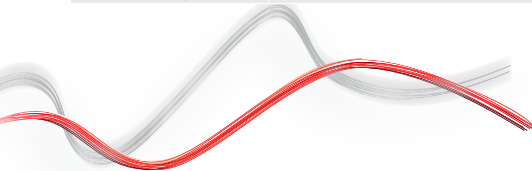
PHOBOS AC A



Electromechanical 230v worm-drive for swing gates



	PHOBOS AC A25	PHOBOS AC A50
Gate leaf length	2.5 m	5 m
Max Leaf	400 kg	500 kg
Power supply		230 V
Power input		210 W
Frequency of use		semi-intensive
Control unit		RIGEL 6
Board power supply		230 V
Useful rod stroke	350 mm	460 mm
Maximum angle	120 °	129 °
Cycle time	14 sec	18 sec
Type of limit switch		work time
Slowdown		no
Locking		mechanical
Release		personal key
Impact reaction		electric clutch
Environmental conditions		from -20 °C to 55 °C
Protection rating		IP X4



North branch - 0161 456 0456
South branch - 01488 674 750

info@bft.co.uk
www.bftautomationuk.com