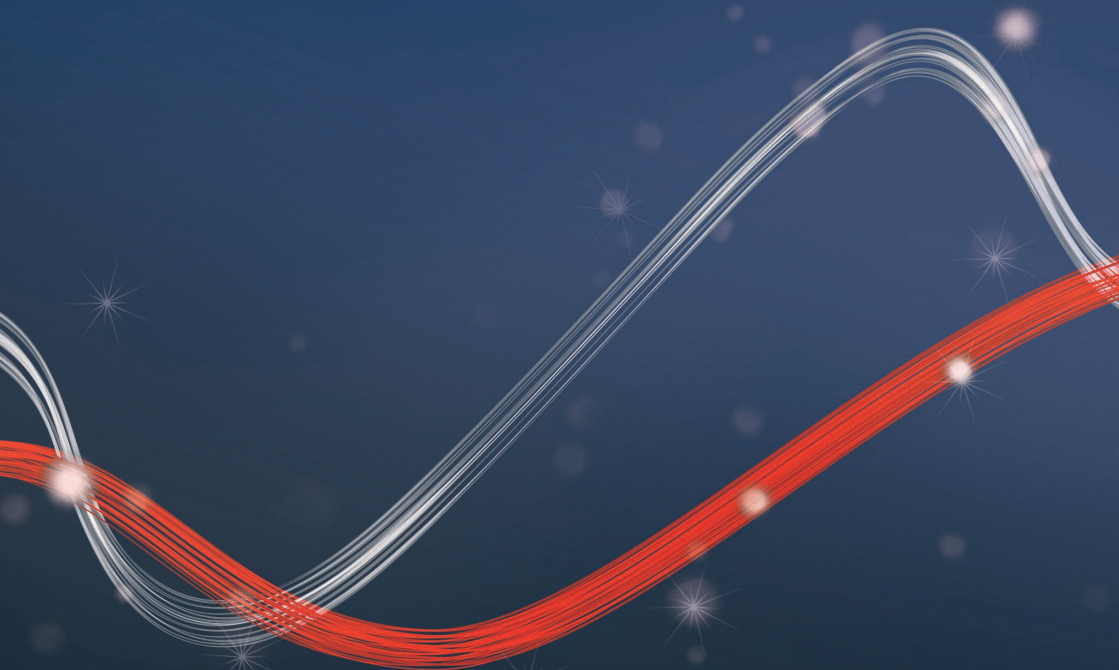
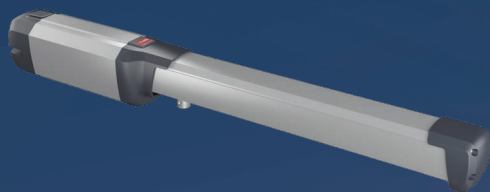




Be ahead

PHOBOS BT A

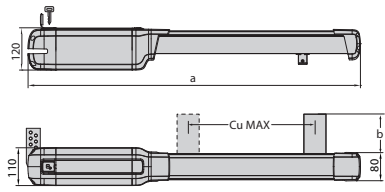
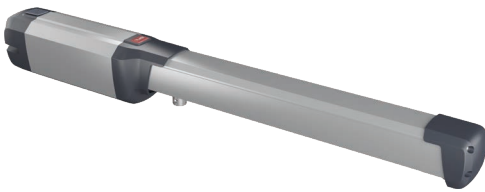




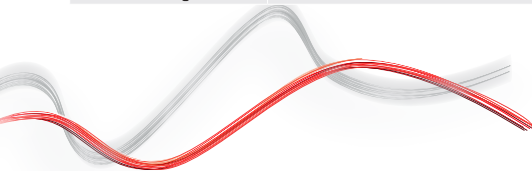
PHOBOS BT A



Electromechanical 24v worm-drive for swing gates



	PHOBOS BT A25	PHOBOS BT A40
Gate leaf length	2.5 m	4 m
Max Leaf	400 kg	500 kg
Power supply		24 V
Power input		50 W
Frequency of use		intensive
Control unit		THALIA
Useful rod stroke	290 mm	400 mm
Maximum angle	116 °	124 °
Cycle time	15 sec	20 sec
Type of limit switch		magnetic
Slowdown		yes
Locking		mechanical
Release		yes
Impact reaction		d-track
Environmental conditions		from -20 °C to 55 °C
Protection rating		IPX4



North branch - 0161 456 0456
South branch - 01488 674 750

info@bft.co.uk
www.bftautomationuk.com